

Connect 3D

5016 Turmeric/Honey

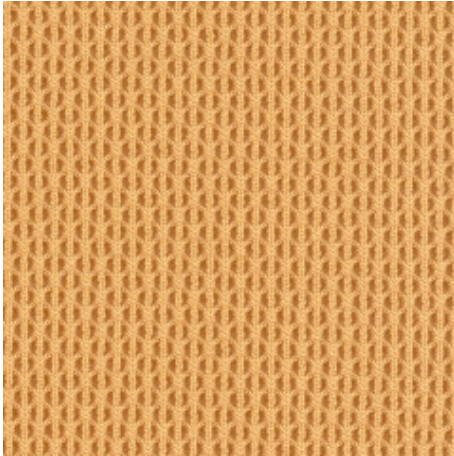


Image Shown: Warp Horizontal

Color Accuracy

Colors are representative and may vary slightly from the actual material. For more information, visit us online.

Type	Seating Upholstery
Pattern	Connect 3D
Status	Active
Content	100% Polyester (Antimony Free Yarn)+
Offering	Steelcase Surfaces
Collection	Inspire
Brand	Steelcase, Turnstone
Region	Americas, APAC, EMEA
ACT	

TECHNICAL SPECIFICATIONS

Abrasion	100,000 double rubs
Colorfastness to Light	Class 4

MATERIAL CHARACTERISTICS

Antimony Free:	Yes
Cleaning Code:	WS
Dyeing Method:	Jet Dye
Weave:	Knit
Fabric Backing:	None
Topical Finish:	None
Design:	Solid, Texture
Horizontal Repeat:	0.17in
Vertical Repeat:	0.13in
Weight:	20.5 ozs per linear yard
Width:	60in
Country of Origin:	United States
Warranty:	12 years

Turmeric/Honey

5016 Turmeric/Honey

(H) Horizontal (V) Vertical (FC) Fire Code

PRODUCT LINE AVAILABILITY

434 Cobi (H, V)

434 Cobi Sewn (H, V)

Media:Scape Lounge (H, V)