

3D Knit

5090 Wasabi

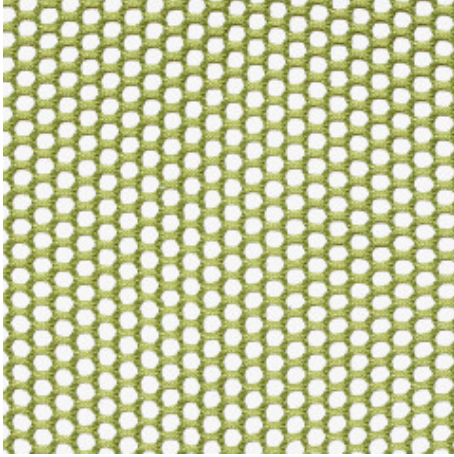


Image Shown: Warp Horizontal

Color Accuracy

Colors are representative and may vary slightly from the actual material. For more information, visit us online.

Type	Seating Upholstery
Pattern	3D Knit
Status	Active
Content	100% Polyester
Offering	Steelcase Surfaces
Collection	Classics
Brand	Steelcase
Region	Americas, APAC, EMEA
ACT	

TECHNICAL SPECIFICATIONS

Abrasion	100,000 double rubs
Crocking - Dry	Class 4
Crocking - Wet	Class 4
Colorfastness to Light	Class 4

MATERIAL CHARACTERISTICS

Cleaning Code:	WS
Dyeing Method:	Jet Dye
Weave:	Knit
Fabric Backing:	None
Topical Finish:	None
Design:	Pattern, Solid, Texture
Horizontal Repeat:	0.22in
Vertical Repeat:	0.38in
Weight:	19 ozs per linear yard
Width:	57in
Country of Origin:	United States
Warranty:	12 years

Wasabi

5090 Wasabi

(H) Horizontal (V) Vertical (FC) Fire Code

PRODUCT LINE AVAILABILITY

- 416 i2i Lounge Chair (H, V)
- 442 Gesture (H, V)
- 462 Leap 3D Knit Sewn (H, V)
- 462 Leap 3D Knit Std (H, V)
- 462 Leap Plus 3D Knit Sewn (H, V)
- 462 Leap Plus 3D Knit Std (H, V)
- 465 Think Std (Old) (H, V)
- 465 Think Uph Back (H, V)
- 482 Amia 3D Knit Sewn (H, V)
- 482 Amia 3D Knit Standard (H, V)