

Cascade

CE-000 Bark

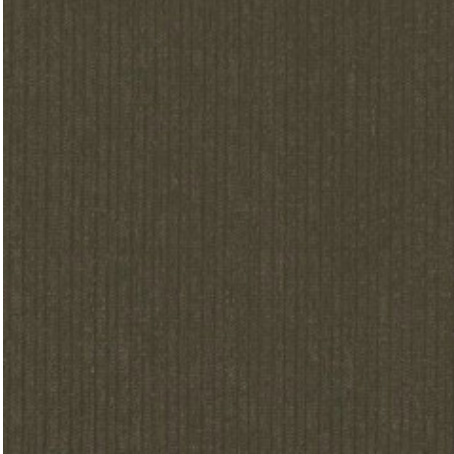


Image Shown: Warp Vertical

Color Accuracy

Colors are representative and may vary slightly from the actual material. For more information, visit us online.

More Color Available

All colors for this swatch are available on next page.

Type	Seating Upholstery
Pattern	Cascade
Status	Active
Price Group	6
Content	100% Polyurethane
Offering	Steelcase Health Graded-In
Collection	Mayer Fabrics Upholstery Collection
Brand	Steelcase Health
Region	Americas
Sample Ordering	Order from Mayer Fabrics
Environmental Characteristics	Antimony Less Than 100 ppm, Bleach Cleanable, Greenguard Certified
ACT	

TECHNICAL SPECIFICATIONS

Abrasion	150,000 double rubs
Crocking - Dry	Class 4
Crocking - Wet	Class 4
Colorfastness to Light	Class 4
Breaking Strength - Warp	144 lbs
Breaking Strength - Weft	113 lbs
Seam Slippage - Warp	59.6 lbs
Seam Slippage - Weft	44.4 lbs
Fire Retardancy	Please check the COM database for CAL 133 results on this fabric

MATERIAL CHARACTERISTICS

Cleaning Code:	WS
Weave:	Non-Woven
Fabric Backing:	Knit
Topical Finish:	Writer's Block
Design:	Solid
Weight:	20 ozs per linear yard
Width:	54in
Country of Origin:	China
Warranty:	Warrantied by Supplier

Cascade

Cascade Library



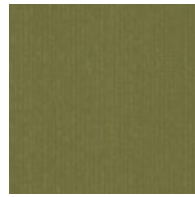
CE-000 Bark



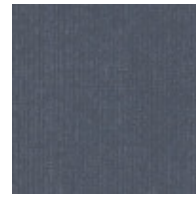
CE-001 Scarlet



CE-002 Saffron



CE-003 Jade



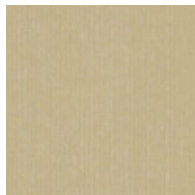
CE-004 Atlantic



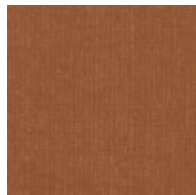
CE-005 Magenta



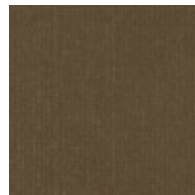
CE-006 Jet



CE-007 Ecu



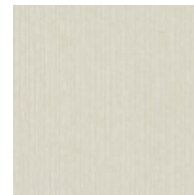
CE-009 Tangerine



CE-010 Umber



CE-016 Seal



CE-017 Glacier



CE-026 Pewter

Cascade

CE-000 Bark

(H) Horizontal (V) Vertical (FC) Fire Code

PRODUCT LINE AVAILABILITY

301 A La Carte Guest (H, V)	464 Leap Ottoman (H, V)	Hawthorne (H)
301 A La Carte Rd Back (H, V)	465 Think 3D Knit Back (H, V)	Jarrah (H)
301 A La Carte Sq Back (H, V)	465 Think Uph Back (H, V)	Kart Upholstered Seat (H, V)
307 Scoop (H, V)	466 Reply Multi-Use Sewn (H, V)	Kart Upholstered Seat And Back (H, V)
308 Crew Guest (H, V)	466 Reply Work (Task) Sewn (H, V)	Leela (H)
308 Crew Task Plastic Outer Bk (H, V)	474 Snodgrass (H, V)	Malibu (H)
311 Uno (H, V)	475 Player (H, V)	Media:Scape Lounge (H, V)
312 Shortcut (H, V)	480 Node (H, V)	Mineral Recliner (H)
313 Jacket (H, V)	482 Amia 3D Knit Sewn (H, V)	Mitra (H)
314 Jenny (H, V)	482 Amia Air Sewn (H, V)	Mitra Lounge (H)
344 Alight Corner (H, V)	482 Amia Sewn (H, V)	Mitra Recliner (H)
344 Alight Round/Bench (H, V)	487 Cachet (H, V)	Mitra Sleeper (V)
376 Sawyer (H, V)	488 Brody Footrest (H, V)	Mobile Pedestal Cushion (H, V)
383 Jersey Sewn (H, V)	488 Brody Seat (H, V)	Neighbor (H)
416 i2i Lounge Chair (H, V)	490 Move (H, V)	Nikko (H)
418 SILQ Sewn (V)	Aspekt (H)	Nooi (H, V)
428 Qivi Std (H, V)	B-Free Beam (H, V)	Opus (H)
433 Protege Sewn (H, V)	B-Free Cube (H, V)	Regard (H)
434 Cobi Sewn (H, V)	Bassline (H, V)	Sequoia (H)
435 Steelcase Series 1 (H, V)	Boardwalk (H, V)	Sieste (H)
436 Series 2 Uph Seat (H, V)	Brighton (H)	Sieste Sleeper (H)
436 Series 2 Uph Seat And Back (H, V)	C:Scape Cushion Tops (H, V)	Sine (H)
442 Gesture (H, V)	Campfire Lounges (H, V)	Slumber Day Bed (H)
453 Plus Criterion (H, V)	Cura Ottoman (H)	Sonata Bench (H)
453 Sewn Back/Sewn Seat Criterion (H, V)	Cura Ultraleather (H)	Sorrel (H)
462 Leap 3D Knit Sewn (H, V)	Cura Upholstered (H)	Sterling Armless (H)
462 Leap Plus 3D Knit Sewn (H, V)	Deck (H, V)	Sterling With Arms (H)
462 Leap Plus 3D Knit Std (H, V)	EE Lateral Cushion (H, V)	Surround (H)
462 Leap Plus Sewn (H, V)	EE Mobile Ped Cushion (H, V)	Sylvi Seating (H)
462 Leap Plus Std (H, V)	Embold (H, V)	Tava Bench (H)
462 Leap Sewn (H, V)	Empath (H)	Tava Guest (H)
463 Ally Sewn (H, V)	Empress (H)	Tava Lounge (H)
463 Ally Standard (H, V)	England (H, V)	Terrazzo (H, V)

Cascade

CE-000 Bark

(H) Horizontal (V) Vertical (FC) Fire Code

PRODUCT LINE AVAILABILITY(CONTINUED)

Ts2 Pedestal Cushion (H, V)

Universal Lateral Cushion Top (H, V)

Universal Mobile Ped (H, V)

X-Tenz Double Sleeper (H)

X-Tenz Sleeper (H)