

Reply Air Mesh

AR01 Grey

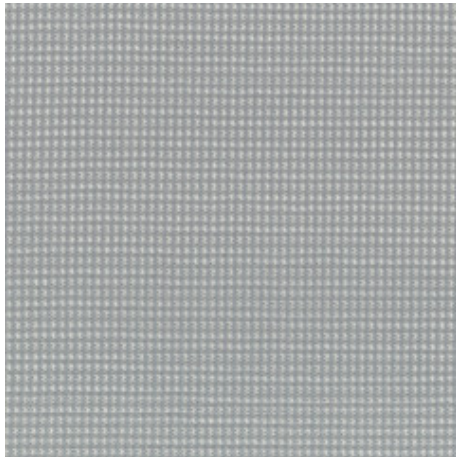


Image Shown: Warp Horizontal

Color Accuracy

Colors are representative and may vary slightly from the actual material. For more information, visit us online.

Type	Seating Upholstery
Pattern	Reply Air Mesh
Status	Active
Content	34% Polyamide, 66% Polyester
Offering	Steelcase Surfaces
Collection	Classics Standard Finishes
Brand	Steelcase, Turnstone
Region	Americas, APAC, EMEA
ACT	

TECHNICAL SPECIFICATIONS

Abrasion	100,000 double rubs
Crocking - Dry	Class 4
Crocking - Wet	Class 4
Colorfastness to Light	Class 4
Fire Retardancy	Please check the COM database for CAL 133 results on this fabric

MATERIAL CHARACTERISTICS

Cleaning Code:	WS
Dyeing Method:	Yarn Dye
Weave:	Dobby Weave
Fabric Backing:	None
Topical Finish:	None
Design:	Pattern, Solid, Texture
Weight:	16 ozs per linear yard
Width:	58in
Country of Origin:	Italy
Warranty:	12 years

Grey

AR01 Grey

(H) Horizontal (V) Vertical (FC) Fire Code

PRODUCT LINE AVAILABILITY

466 Reply Multi-Use Sewn (H, V)

466 Reply Multi-Use Std (H, V)

466 Reply Work (Task) Sewn (H, V)

466 Reply Work (Task) Std (H, V)

Nooi (H, V)

Simple Seating Cover W/Snaps Slipcover
(H, V)

Simple Seating Seat/Back Cush (H, V)

Simple Seating Textiles Slipcover (H, V)

Ts2file (H, V)

Turnstone Fixed Pedestals (H, V)